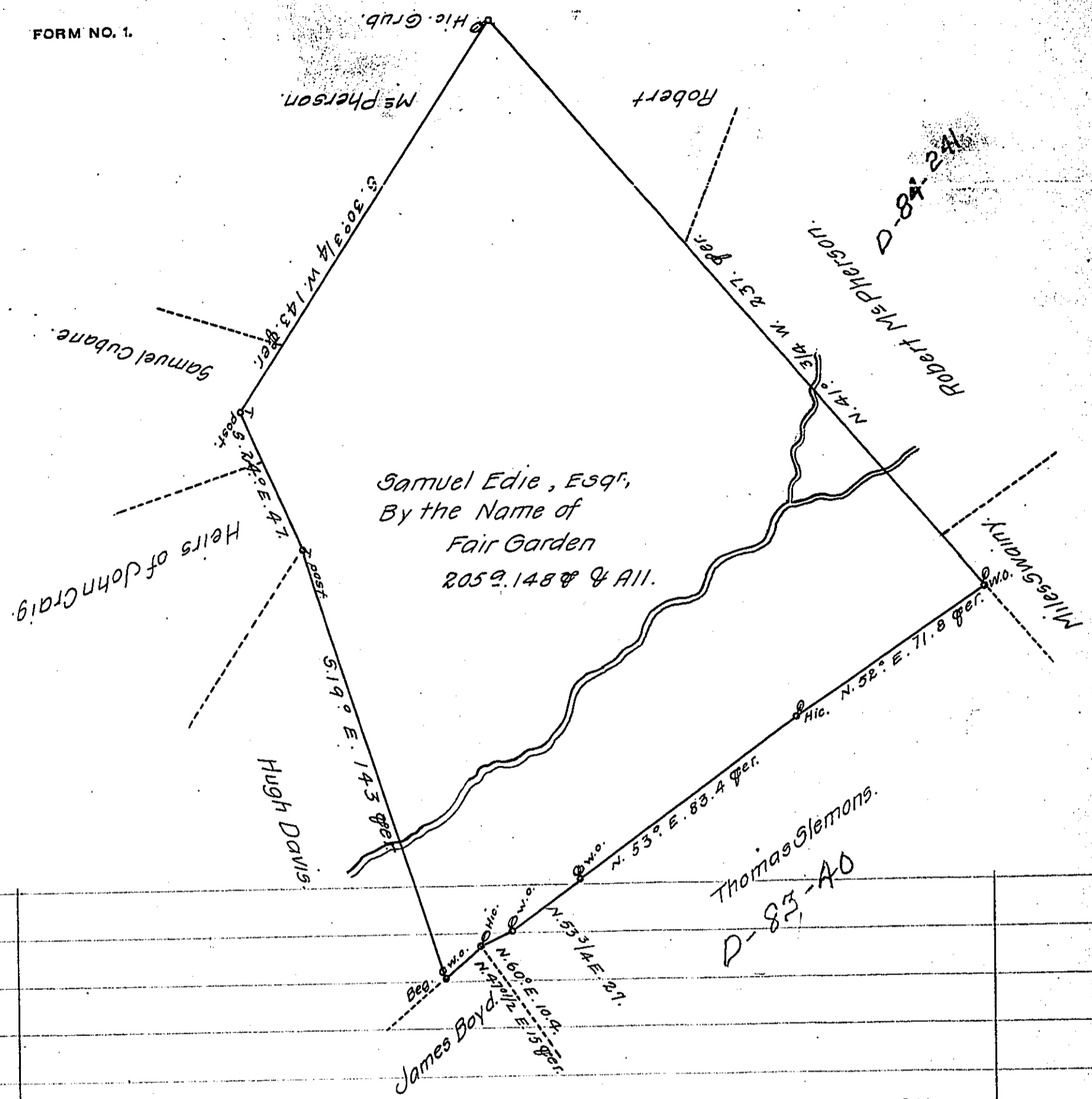


FORM NO. 1.



Situated in Cumberland Township, York County and is part of the Honble. the Proprietaries Manor of Maske and Surveyed February the 16th, 1767. In pursuance of a warrant Dated January 16th., 1767.

To John Lukens, Esqr, }
 Surveyor General. } By Archd. McClean, D.S.

IN TESTIMONY that the above is a copy of the original remaining on file in the Department of Internal Affairs of Pennsylvania, made conformably to an Act of Assembly approved the 16th day of February, 1833, I have hereunto set my Hand and caused the Seal of said Department to be affixed at Harrisburg, this eighteenth day of January, 1912.

Henry Hoover
 Secretary of Internal Affairs.